

**PLAN SHOWING  
PROPOSED SUBDIVISION**  
OF PART OF  
**NW 1/4 SEC 29, TWP 19, RGE 21, W 2 Mer**  
**TOWN OF LUMSDEN**  
**SASKATCHEWAN**  
**2010**

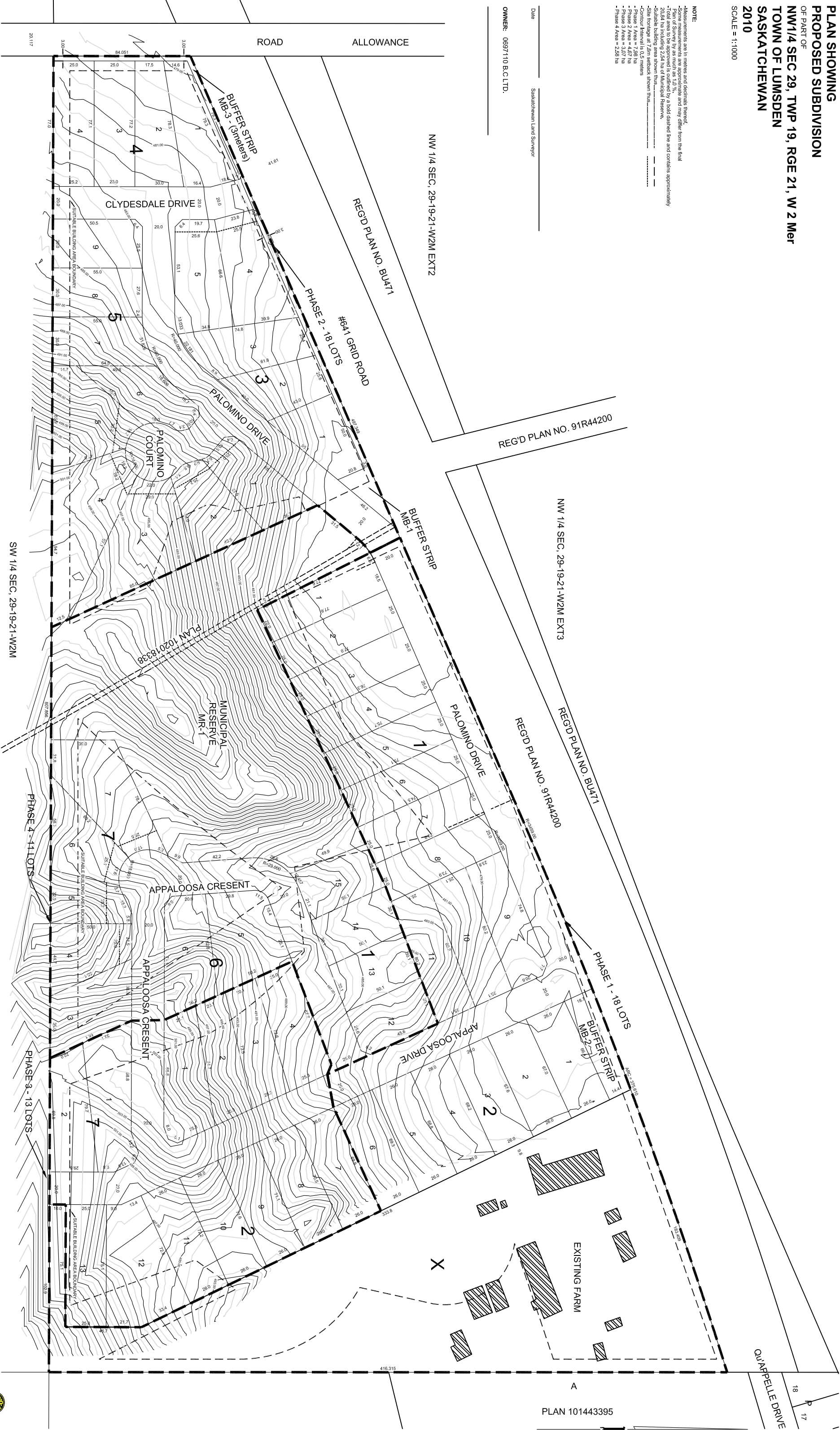
SCALE = 1:1000

**NOTE:**

- Measurements are in metres and decimals thereof.
- Some measurements are approximate and may differ from the final Plan of Survey by as much as 1.0%.
- The area shown is approximately a bold dashed line and contains approximately 20.84 ha including 2.54 ha of Municipal Reserve.
- Suitable building area shown thus:-----
- Site frontage at 7.5m setback shown thus:-----
- Contour Interval is 0.5 metres
- Phase 1 Area = 7.99 ha
- Phase 2 Area = 4.07 ha
- Phase 3 Area = 4.07 ha
- Phase 4 Area = 2.56 ha

Date \_\_\_\_\_ Saskatchewan Land Surveyor

OWNER: 0697110 B.C.LTD.



PLAN 101443395



R. J. H. SURVEYORS  
Professional Surveyors