

**PLAN SHOWING
PROPOSED SUBDIVISION**
OF PART OF
NW1/4 SEC 29, TWP 19, RGE 21, W 2 Mer
TOWN OF LUMSDEN
SASKATCHEWAN
2010

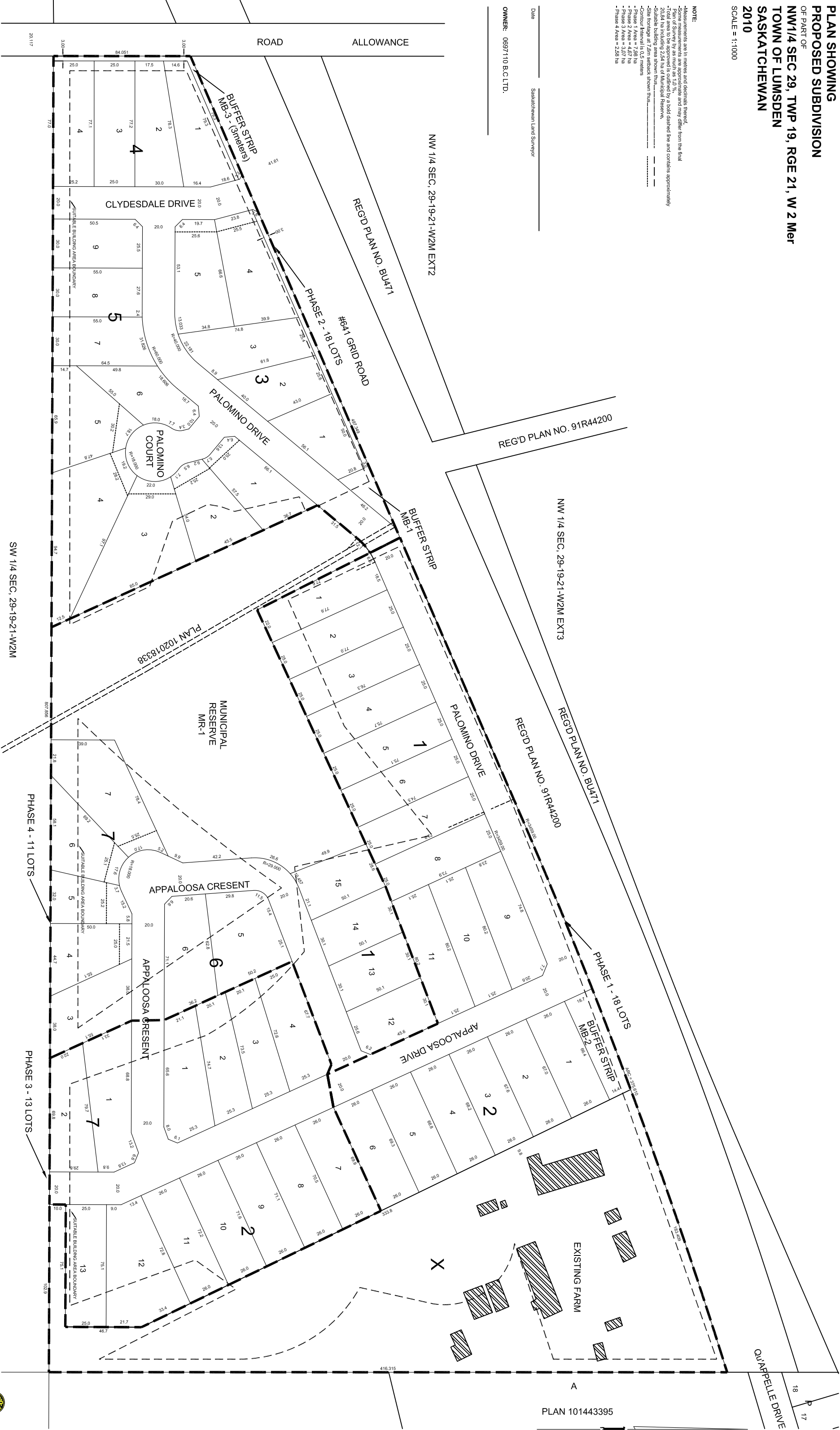
SCALE = 1:1000

NOTE:

- Measurements are in metres and decimals thereof.
- Some measurements are approximate and may differ from the final Plan of Survey by as much as 1.0%.
- The area shown is approximately a bold dashed line and contains approximately 20.84 ha including 2.54 ha of Municipal Reserve.
- Suitable building area shown thus:.....
- Site frontage at 7.5m setback shown thus:.....
- Contour Interval is 0.5 metres
- Phase 1 Area = 7.99 ha
- Phase 2 Area = 4.07 ha
- Phase 3 Area = 4.07 ha
- Phase 4 Area = 2.56 ha

Date _____ Saskatchewan Land Surveyor

OWNER: 0697110 B.C.LTD.



PLAN 101443395



Professional Surveyors